

USER MANUAL



MWS9943



MWS9940

MULTIPOINT USB over LAN Workstation

TABLE OF CONTENTS

INTRODUCTION.....	3
FEATURES.....	3
PACKAGE CONTENTS	3
APPLICATION.....	4
SPECIFICATIONS	5
SUPPORTED DISPLAY	
RESOLUTIONS	5
MINIMUM SYSTEM	
REQUIREMENTS	6
MAC ADDRESS REMARKING	7
DEVICE INSTALLING - SOFTWARE	8
DEVICE INSTALLING - HARDWARE	11
THE STATION ASSIGNMENT AND	
FUNCTION SETTING	12
STATIONS RENAME	19
NETWORK SETTING	20
RESTART DEVICE.....	21
VERIFY THE MULTIPOINT	
WORKSTATION CONNECTION	22
ADJUSTING THE SCREEN	
RESOLUTION.....	24
DEVICE DRIVER UN-INSTALLATION	26
VESA MOUNTING.....	28
TROUBLESHOOTING TIPS	29

MULTIPOINT USB over LAN Workstation

INTRODUCTION

Thank you for purchasing the MultiPoint Workstation. The MultiPoint Workstation is designed specifically for Windows MultiPoint Server 2011. Simply connect it to an available Gigabit Ethernet Port on the server, and attach a monitor, keyboard, and mouse to add a new workstation. The MultiPoint Workstation features Two (Three) high-speed USB 2.0 ports, audio and microphone ports, Gigabit LAN port, a VGA port that supports resolutions up to 1680 x 1050, and a power switch that can also reset this device. Add up to ten MultiPoint Workstation per server. The MultiPoint Workstation provides an inexpensive and reliable way to expand your Windows MultiPoint Server 2011 for school and office running “office application”; “Home Entertainment” and “Full Screen Movie Playback” are not recommended.

© 2013 Microsoft. All rights reserved.

Microsoft, Active Directory, MultiPoint Server, Office, .NET Framework, Windows, and Windows Server are trademarks of the Microsoft group of companies. All other trademarks are property of their respective owners

FEATURES

- ♦ Ethernet connection the host server with distance free
- ♦ Simple plug and play setup
- ♦ Eliminates the need for internal video card installation
- ♦ Designed for Microsoft Windows MultiPoint Server 2011
- ♦ Simplified administration
- ♦ Up to 10 WorkStations per Server PC

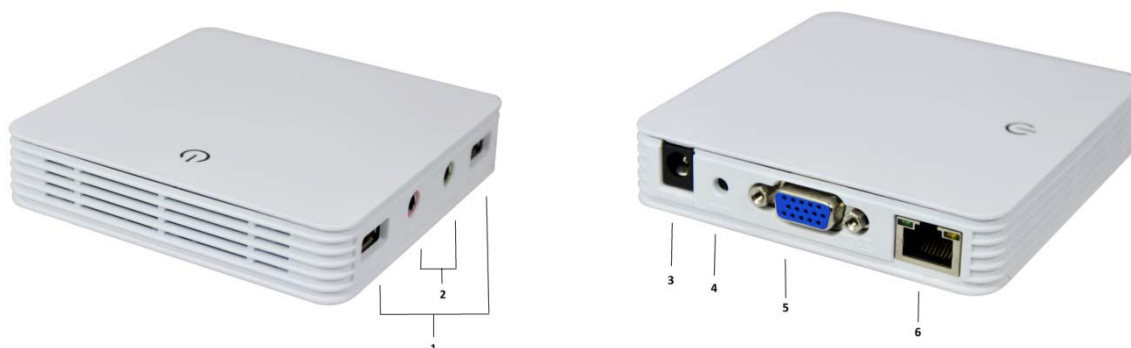
PACKAGE CONTENTS

- ♦ MultiPoint Workstation
- ♦ VESA Mounting Kits
- ♦ 3A/5V AC Power Adapter
- ♦ CD (Driver and User Manual)

MULTIPOINT USB over LAN Workstation

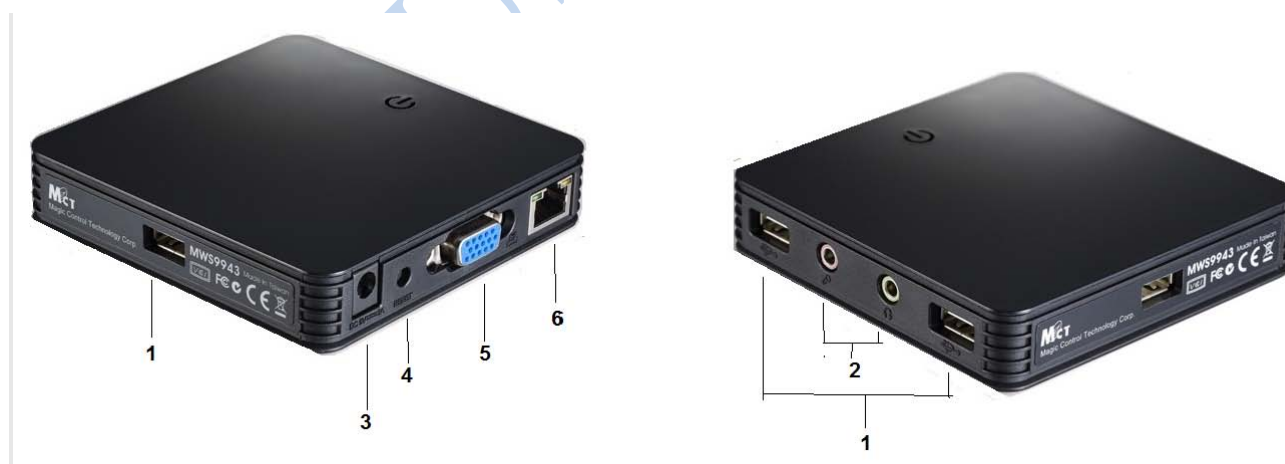
APPLICATION

MWS9940



1. Two High-Speed USB Ports
2. Stereo Audio Output (Microphone & Headphone)
3. AC Power Jack
4. Reset Button
5. VGA (DB-15) Port
6. Giga LAN (RJ-45) Port

MWS9943



1. Three High-Speed USB Ports
2. Stereo Audio Output (Microphone & Headphone)
3. AC Power Jack
4. Reset Button
5. VGA (DB-15) Port
6. Giga LAN (RJ-45) Port

MULTIPOINT USB over LAN Workstation

SPECIFICATIONS

		MWS9940	MWS9943
Server OS Support		Window MultiPoint Server 2011/2012	
Host Connecting Interface		RJ-45 Connector	RJ-45 Connector
I/O Ports	Gigabits Ethernet RJ-45 Connector	1	1
	USB 2.0 Ports for keyboard and Mouse	2	3
	Stereo Audio Output – Headphone port and Microphone port	2	2
	VGA-Type video output (DB-15)	1	1
	Reset Function Button (Clear Assignment and Recall Factory Defaults)	1	1
	Power Jack	1	1
Product Dimension:		98 x 98 x 21 mm	98 x 98 x 21 mm
Mounting Kit		Support 100 x 100 (mm) VESA holdes	Support 100 x 100 (mm) VESA holdes
Power Supply		Input: 110~240 VAC / 5V ; Output: 3A	Input: 110~240 VAC / 5V ; Output: 3A
Power LED		V	V
Case Material		ABS	ABS
Product Weight		Without mounting kit: Approx. 122.5g	Without mounting kit: Approx. 122.5g
Working Current		≤ 500mA (Self-Power)	≤ 500mA (Self-Power)
Operating Temperature		0 to 40°C	0 to 40°C
Operating humidity (Rh)		10% ~85%	10% ~85%
Regulatory compliances		FCC, CE, C-tick, VCCI, RoHS	FCC, CE, C-tick, VCCI, RoHS

SUPPORTED DISPLAY RESOLUTIONS

Aspect Ratio	Resolution	
16:9	1600 x 900 (is recommended)	
	1280 x 720	1360*768
16:10	1680 x 1050	1440 x 900
	1280 x 800	
4:3	1600 x 1200	1400 x 1050
	1280 x 960	1152 x 864
	1024 x 768	800 x 600
5:4	1280 x1024	
15:9	1280 x 768	

MULTIPOINT USB over LAN Workstation

MINIMUM SYSTEM REQUIREMENTS

Number of Users	4	6	10
CPU (*Note.1)	Quad-core processor		
Recommended	Intel Core i5	Intel Core i5	Intel Core i7
Main Board Chipset	Intel Ivy bridge chipset / Intel Sandy bridge chipset		
RAM	3GB	4GB	8GB
Minimum disk space for setup	32GB		
*Note.1: <ul style="list-style-type: none">✓ x64-based Intel Pentium, Intel quad core (i7, i5, i3), XEON, Intel dual core. Compatible processor (MultiPoint Server supports up to four core & eight core CPUs on one server)✓ Multi-core processor support. Support up to 4 & 8 multi-core processors; dual-core is less powered and therefore only 2 to 3 workstation can be supported.✓ AMD Opteron / Athlon, AMD Embed chipset is not recommend due to unstable keyboard/ mouse operation which may not recognize under USB1.1 device.✓ For Optimum Video Display. Extended video display at full screen is not recommended; it often exhausts CPU and force system with much lower performance.✓ Intel Itanium Processor is not supported✓ Microsoft's license policy is restricting for 10 users per CPU under "Standard Academic version", you can apply for 20 users only if your computer has 2 CPU and your OS license is a "Premium Business version".			

➤ **FOR OPTIMUM VIDEO DISPLAY**

Full screen video display is not recommended, user may try one station for full screen video play back under 720P periodically. a higher system may required for full screen video play back, please refer to following specification:

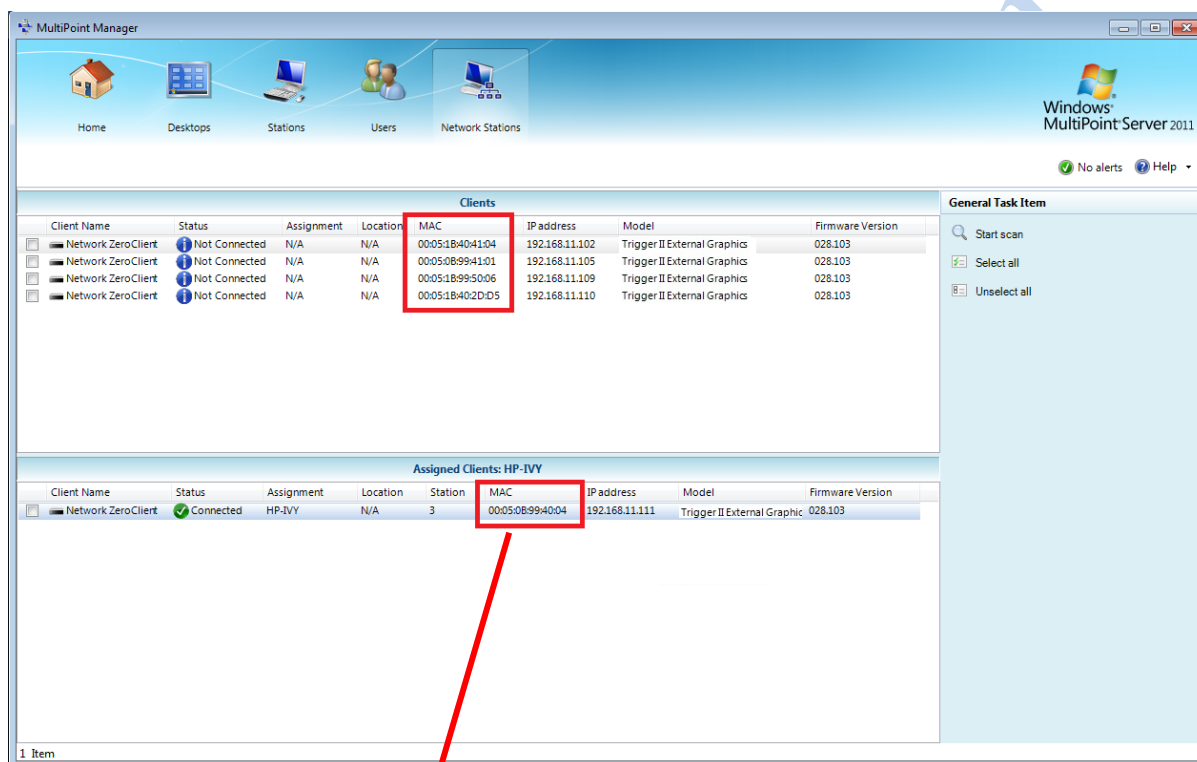
- i7 processor
- Intel Sandy bridge chipset
- Intel Ivy bridge chipset

Note: Extended video display at full screen is not recommended; it often exhausts CPU and force system with much lower performance.

MULTIPOINT USB over LAN Workstation

MAC ADDRESS REMARKING

Assuming multiple server is required, gathering all station HUB (MultiPoint Workstation) first, grouping desired Station Hub in quantity while suite each server's seats, start peeling every (MultiPoint Workstation) MAC Address Label and paste on handbook according to the designated Server Name. It is strongly suggested that all Server administrators follows these steps, please use this handbook as for your important record for MAC address location note below, therefore to avoid confusing when you need to change station hub or add additional hub later.



Server A

No.	MWS400UL MAC address	Remark
1	00 : 05 : 1B : 99 : 40 : 04	Station 3

Server B

No.	MWS400UL MAC address	Remark

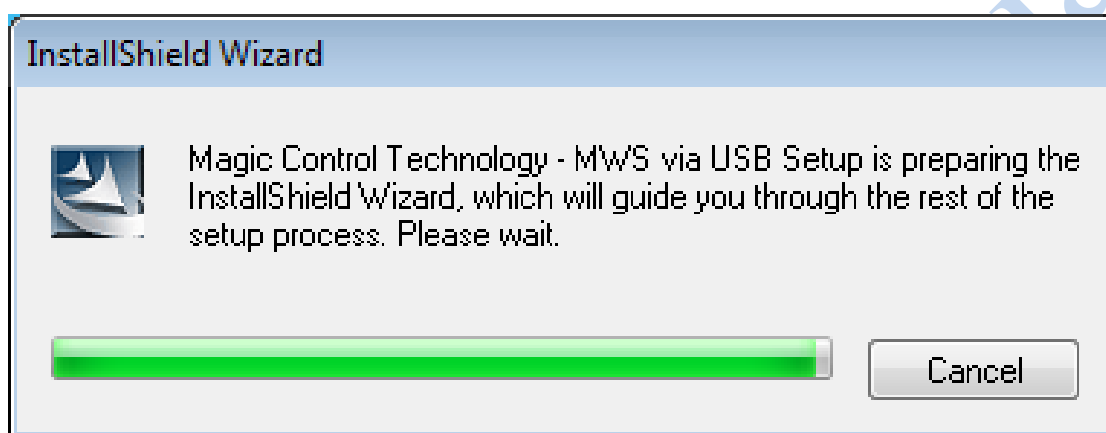
MULTIPOINT USB over LAN Workstation

DEVICE INSTALLING - SOFTWARE

Installing the device driver enables Windows MutliPoint Server 2011 to recognize the MultiPoint Workstation. Please make sure the MultiPoint Workstation is unplugged from your server before executing the setup program.

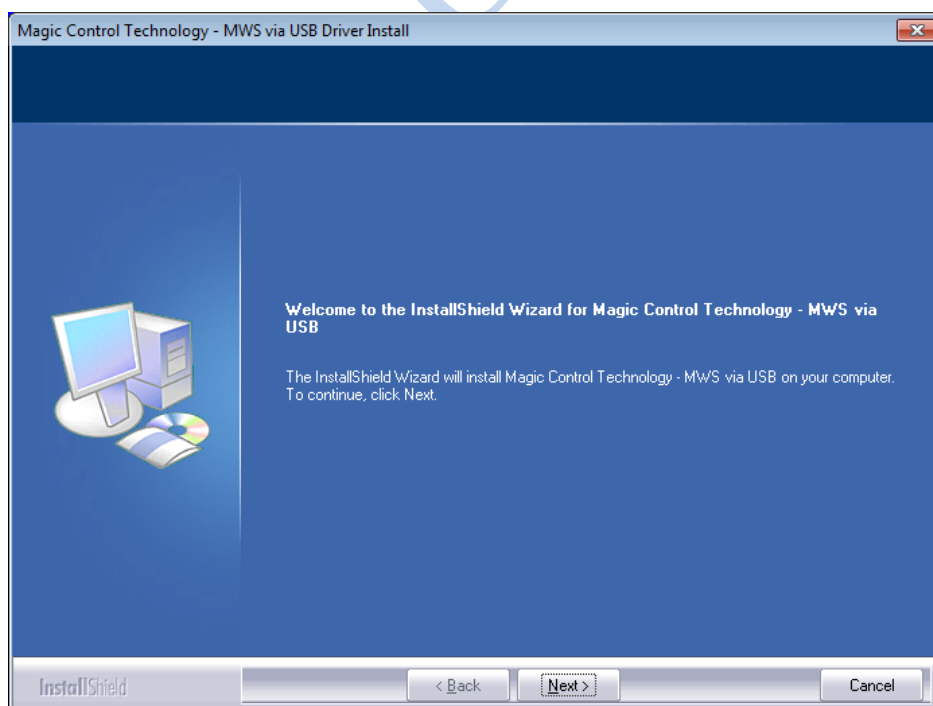
Step 1

Insert the Driver installation CD into the CD-ROM drive. The installer should start automatically. If it does not, double click **Setup.exe** to start the Installation Wizard.



Step 2

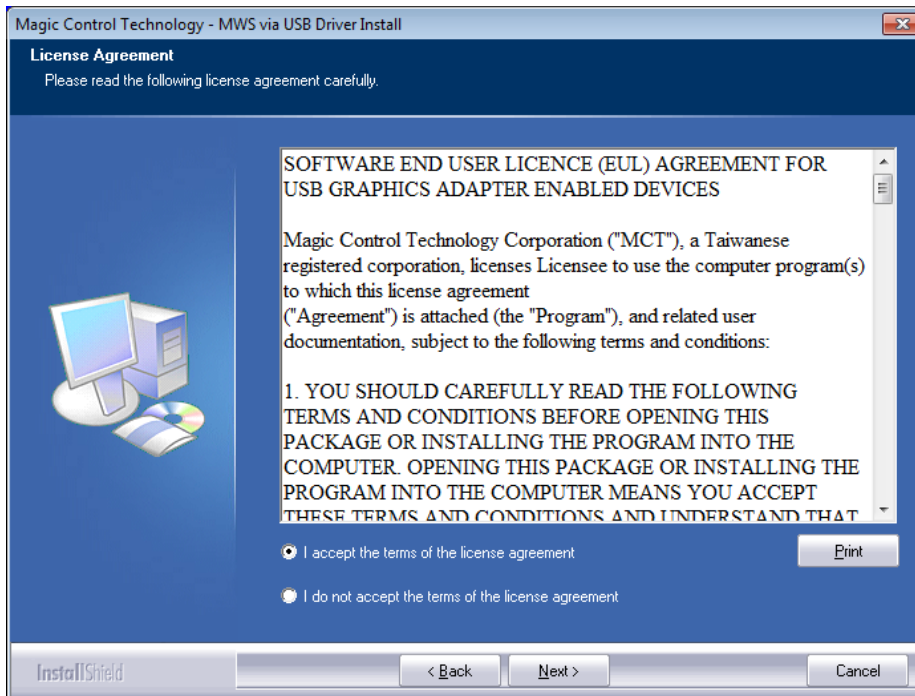
Driver Installation Wizard, click **Next** to continue



MULTIPOINT USB over LAN Workstation

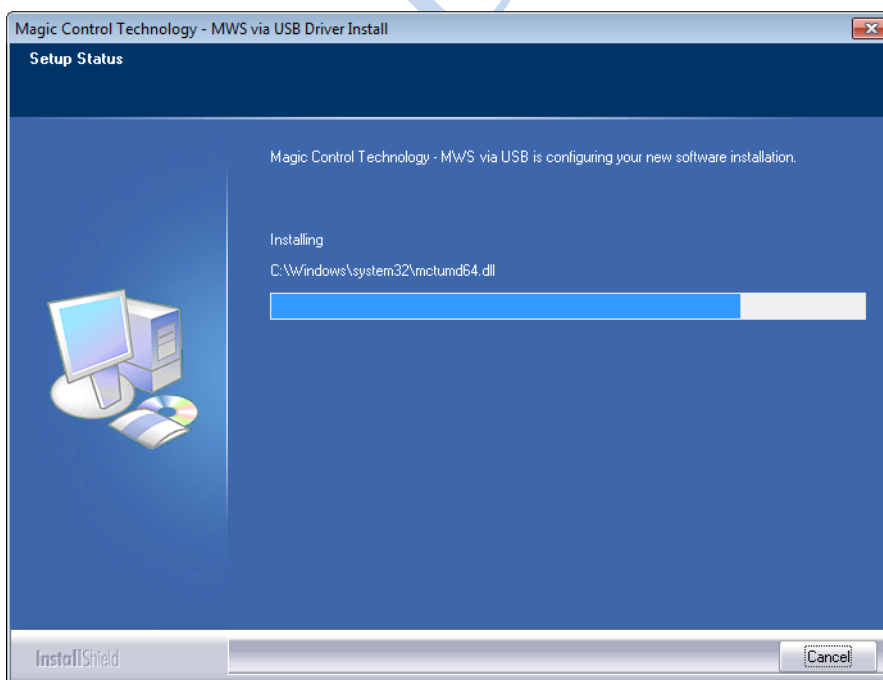
Step 3

License Agreement; review it and check **I accept the terms of the license agreement** Click **Next** to accept the License Agreement.



Step 4

Setup is searching for installed features... *You may notice the screen flashes during hardware installation. It is part of the normal process. .



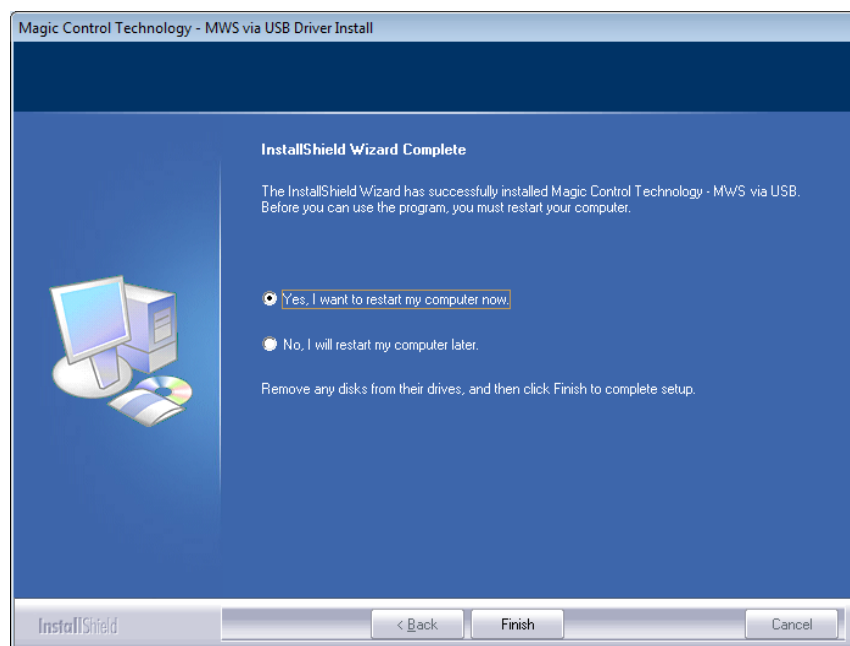
MULTIPOINT USB over LAN Workstation



Setup is searching for installed features...

Step 5

Driver Installation Wizard, click **Finish** to continue and restart the computer.



MULTIPOINT USB over LAN Workstation

DEVICE INSTALLING - HARDWARE

Step 1

Connecting monitor to the VGA connector of the MultiPoint Workstation, turn on the monitor. Connecting power adapter, Giga LAN cable, keyboard, and mouse to the MultiPoint Workstation.

Noted:

Plugging keyboard/mouse directly into main system USB ports is prohibit, administrator need to use an intermediate USB root hub for both keyboard & mouse connections from main system.

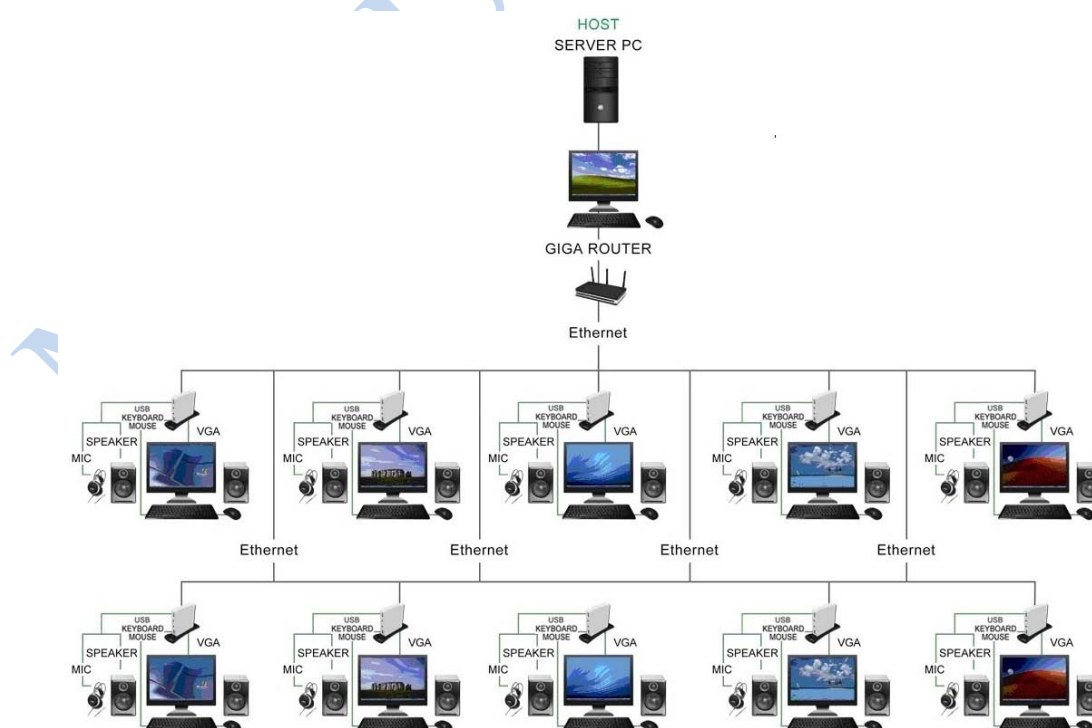
Step 2

Connect one end of the Giga LAN cable to the MultiPoint Workstation and the other end to an available Giga LAN port of Router. The driver installation will proceed automatically.

Step 3

Repeat steps 1 & 2 for the remaining MultiPoint Workstation on to other workstation.

DRAWING OF HARDWARE INSTALLING VIA GIGALAN PORT

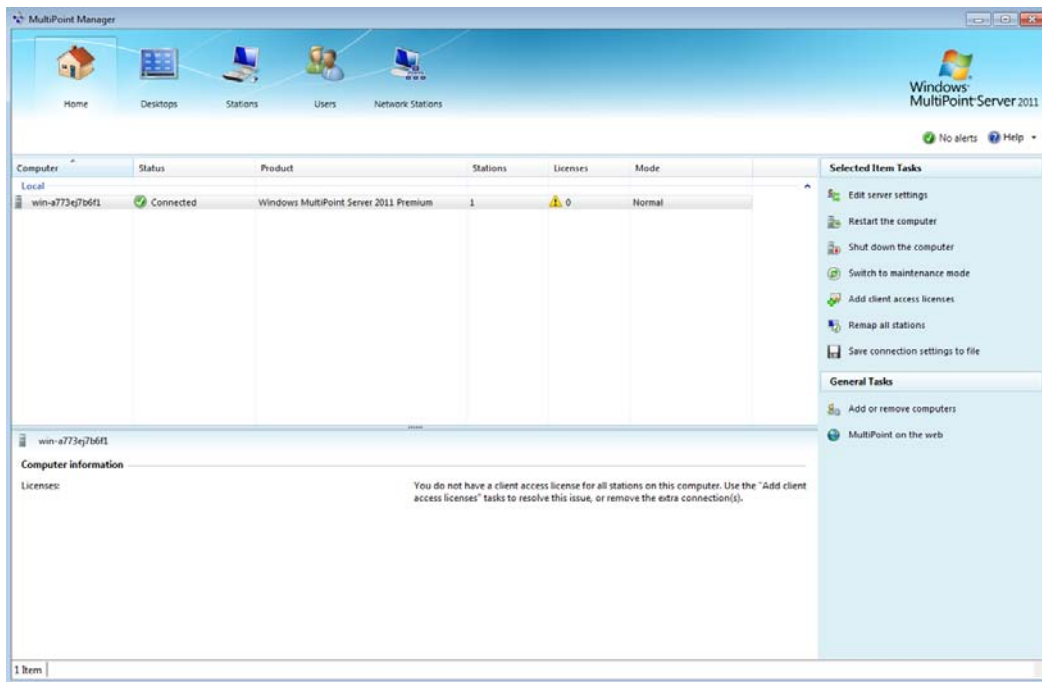


MULTIPOINT USB over LAN Workstation

THE STATION ASSIGNMENT AND FUNCTION SETTING

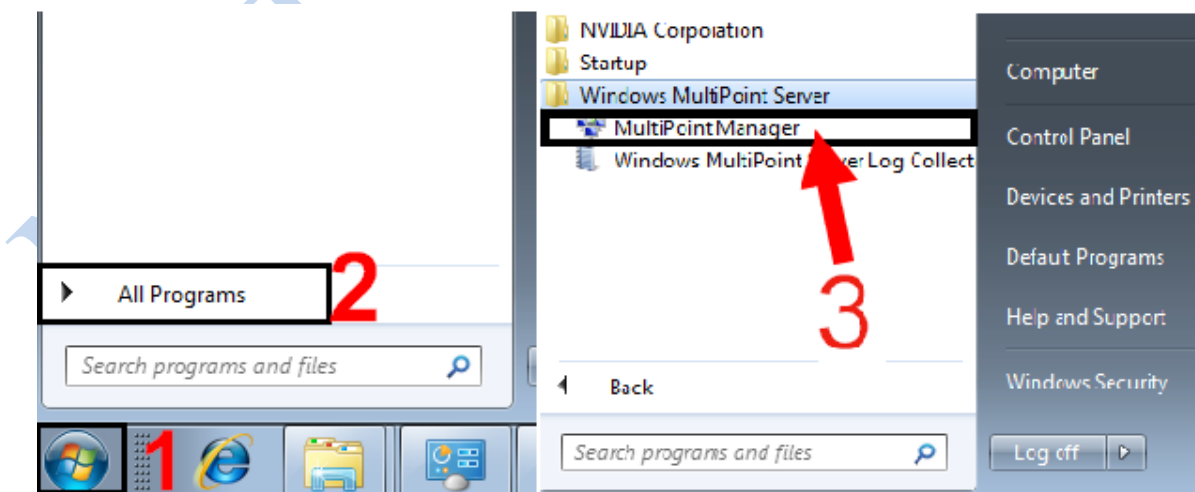
Step 1

The “MultiPoint Manager” page will be auto-displayed in a minute after system boot-up and administrator log-in.



NOTE:

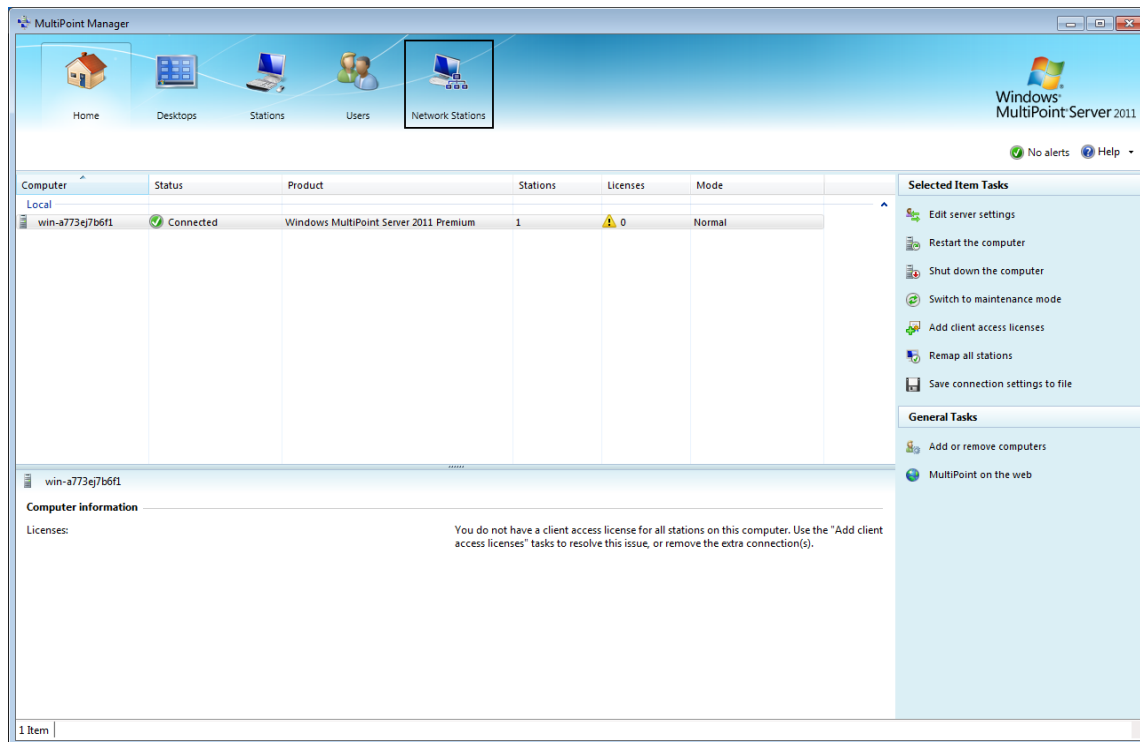
If this page did not pop out automatically, please follow the illustration below: 1. Start → 2. All Programs → 3. MultiPoint Manager



MULTIPOINT USB over LAN Workstation

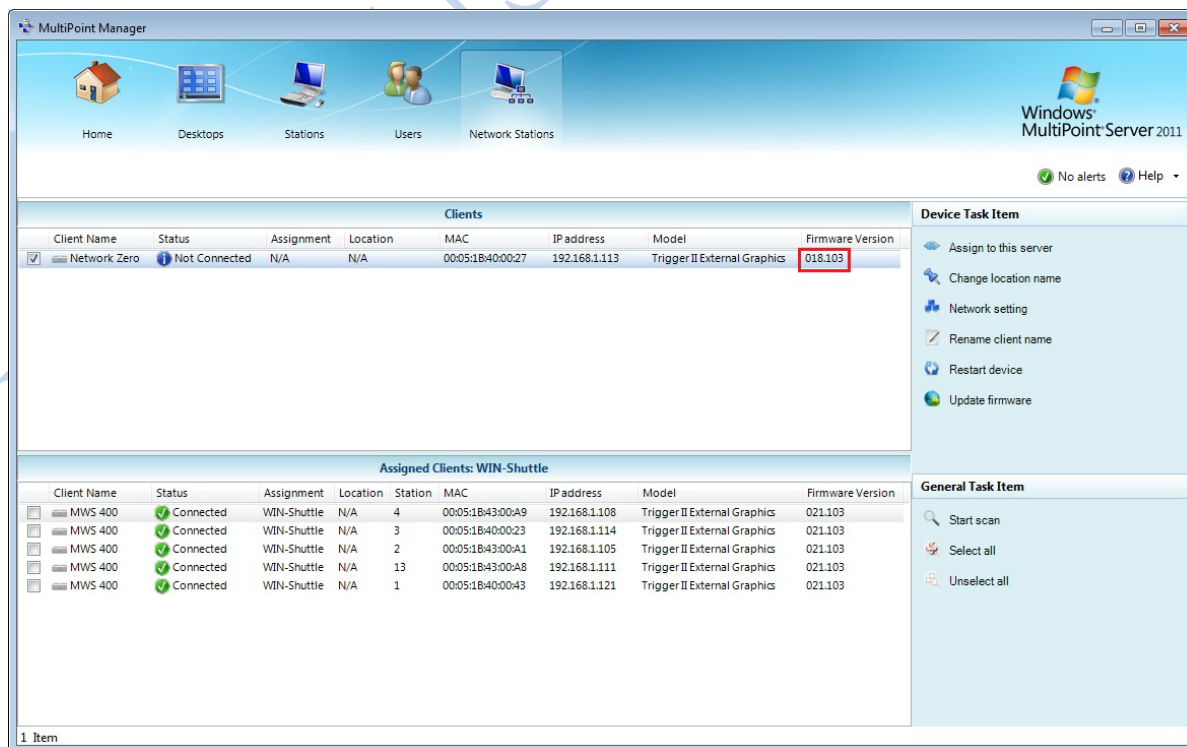
Step 2

Click “Network Stations” as showed:



Step 2-1

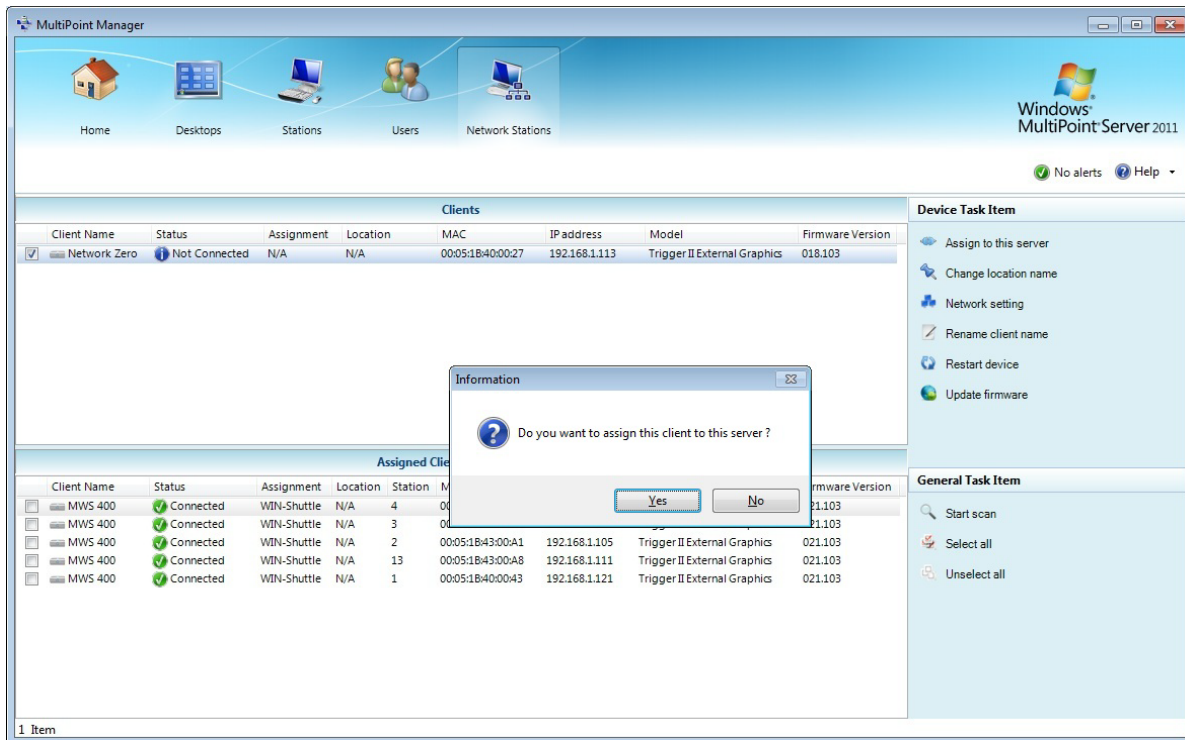
Assign one station to the host server, if the firmware is old version such as 018.103. It will be updated to new firmware simultaneously when you assign the station.



MULTIPOINT USB over LAN Workstation

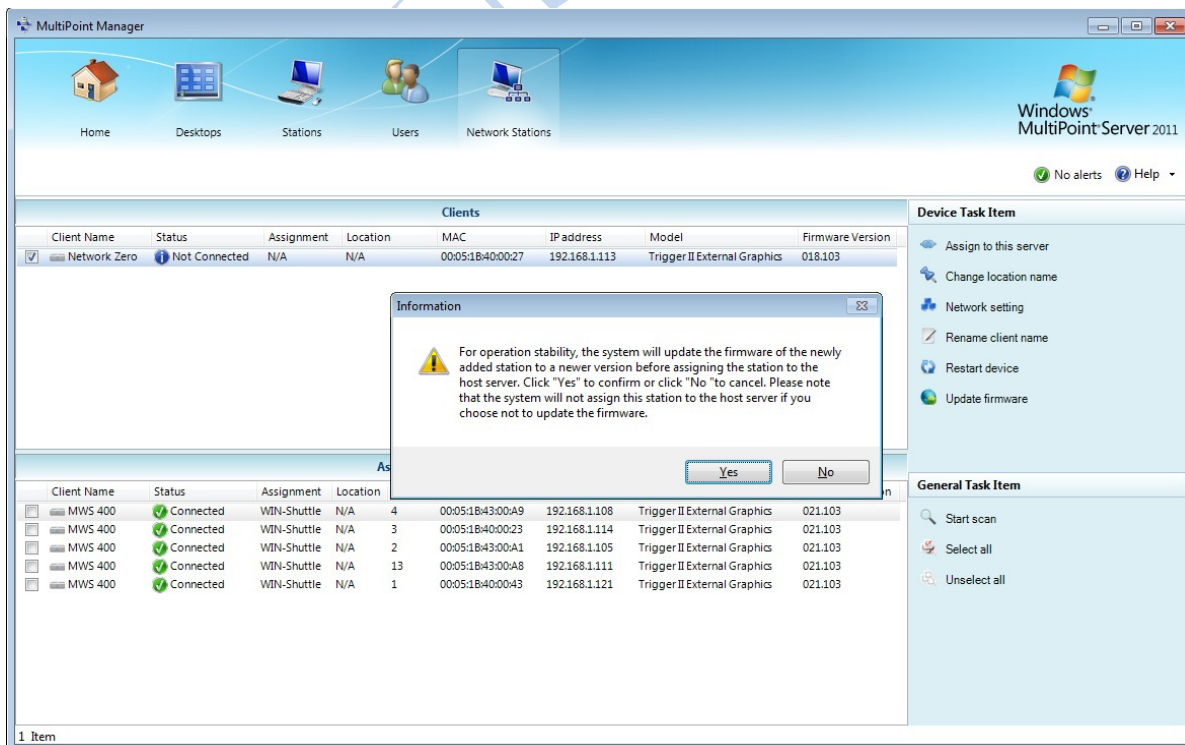
Step 2-2

This screen is asking to assign to this host server. Click “yes” to confirm.



Step 2-3

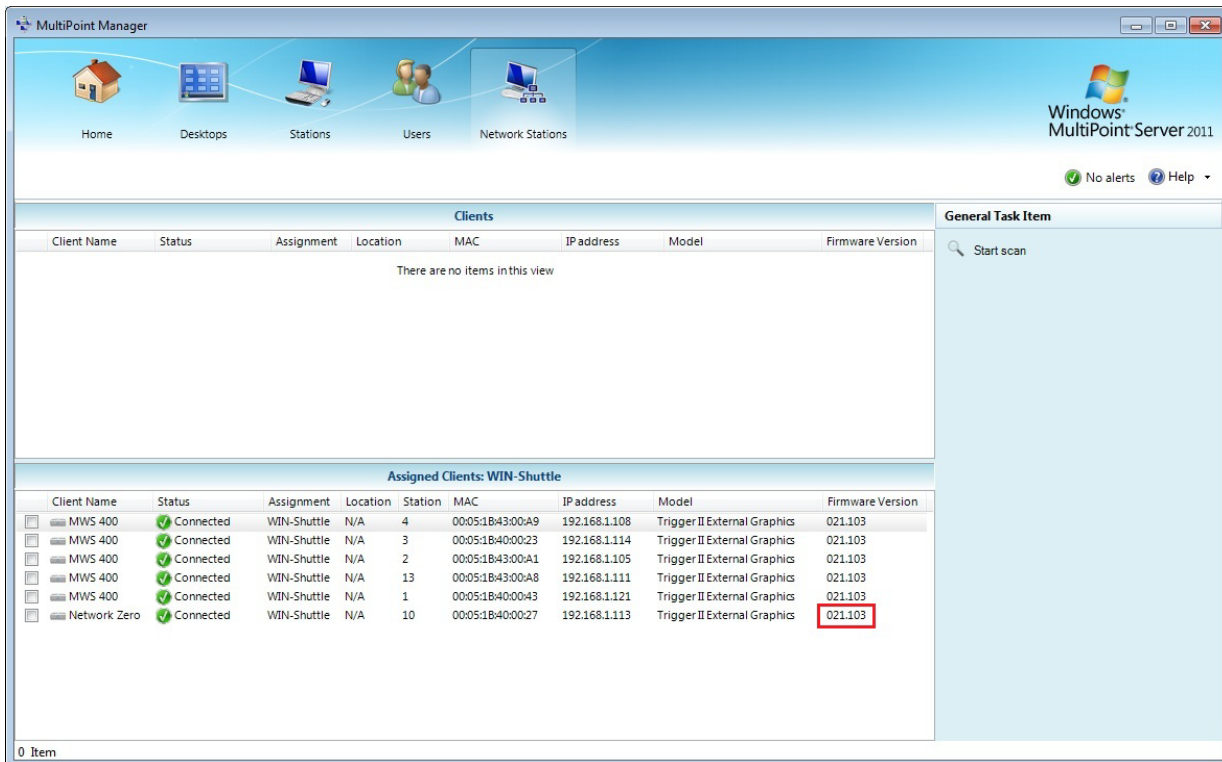
This screen was detected old firmware, click “yes” to update new firmware and assign to the host server.



MULTIPOINT USB over LAN Workstation

Step 2-4

This screen shows “finish assignment”, and new firmware is 021.103.



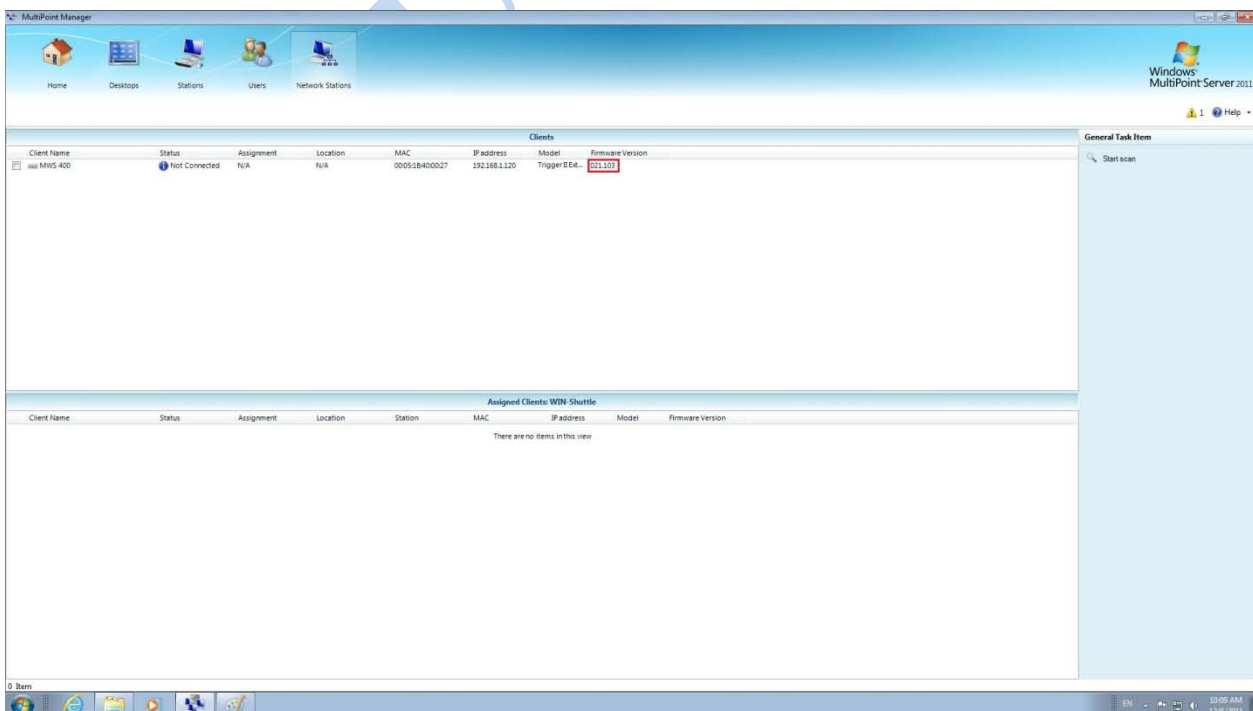
The screenshot shows the MultiPoint Manager interface. The top navigation bar includes Home, Desktops, Stations, Users, and Network Stations. The main area is divided into two sections: 'Clients' and 'Assigned Clients: WIN-Shuttle'. The 'Clients' section is currently empty, displaying 'There are no items in this view'. The 'Assigned Clients: WIN-Shuttle' section contains a table with the following data:

Client Name	Status	Assignment	Location	Station	MAC	IP address	Model	Firmware Version
MWS 400	Connected	WIN-Shuttle	N/A	4	00:05:1B:43:00:A9	192.168.1.108	Trigger II External Graphics	021.103
MWS 400	Connected	WIN-Shuttle	N/A	3	00:05:1B:40:00:23	192.168.1.114	Trigger II External Graphics	021.103
MWS 400	Connected	WIN-Shuttle	N/A	2	00:05:1B:43:00:A1	192.168.1.105	Trigger II External Graphics	021.103
MWS 400	Connected	WIN-Shuttle	N/A	13	00:05:1B:43:00:A8	192.168.1.111	Trigger II External Graphics	021.103
MWS 400	Connected	WIN-Shuttle	N/A	1	00:05:1B:40:00:43	192.168.1.121	Trigger II External Graphics	021.103
Network Zero	Connected	WIN-Shuttle	N/A	10	00:05:1B:40:00:27	192.168.1.113	Trigger II External Graphics	021.103

The 'Firmware Version' column for the last row is highlighted with a red box. The bottom status bar shows '0 Item'.

Step 2-5

If the firmware is newest, no need to update it when assign this station to host server.



The screenshot shows the MultiPoint Manager interface. The top navigation bar includes Home, Desktops, Stations, Users, and Network Stations. The main area is divided into two sections: 'Clients' and 'Assigned Clients: WIN-Shuttle'. The 'Clients' section contains a table with the following data:

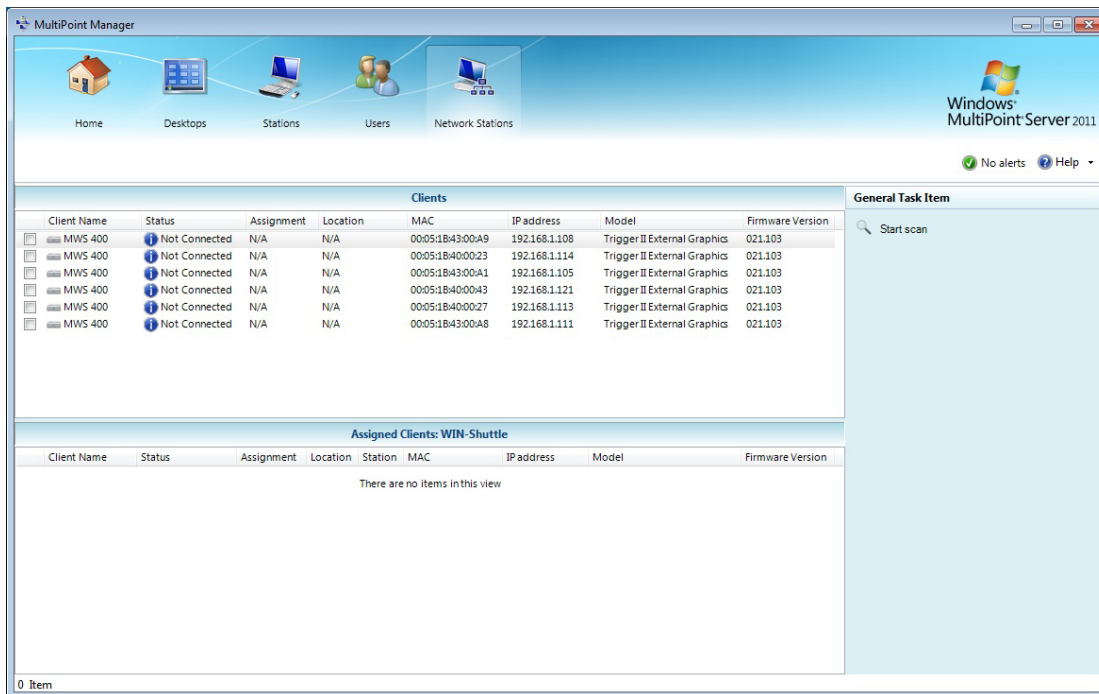
Client Name	Status	Assignment	Location	MAC	IP address	Model	Firmware Version
MWS 400	Not Connected	N/A	N/A	00:05:1B:40:00:27	192.168.1.120	Trigger II External Graphics	021.103

The 'Firmware Version' column for the first row is highlighted with a red box. The 'Assigned Clients: WIN-Shuttle' section is currently empty, displaying 'There are no items in this view'. The bottom status bar shows '0 Item'.

MULTIPOINT USB over LAN Workstation

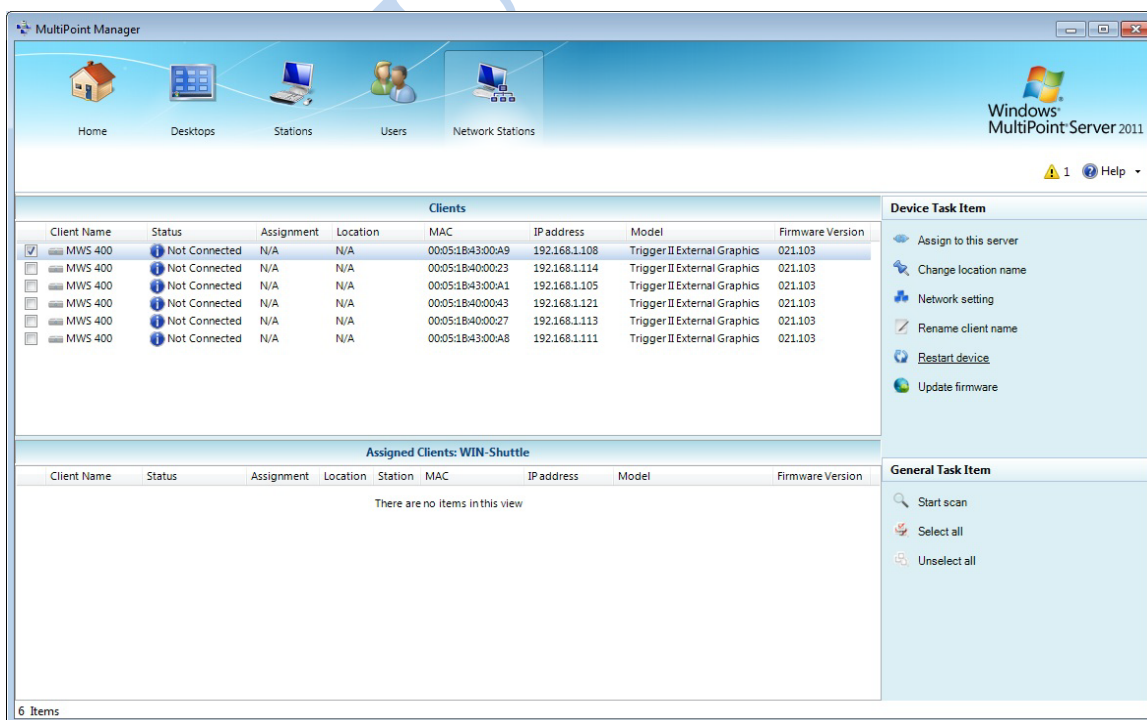
**** You also can assign multi-stations to the host server at the same time. ****

For example: When there is 6 workstation HUB is connected, It shows 6 stations on the screen which are free / waiting for assignment inside the “status” column indicating as “not connected”.



Step 3

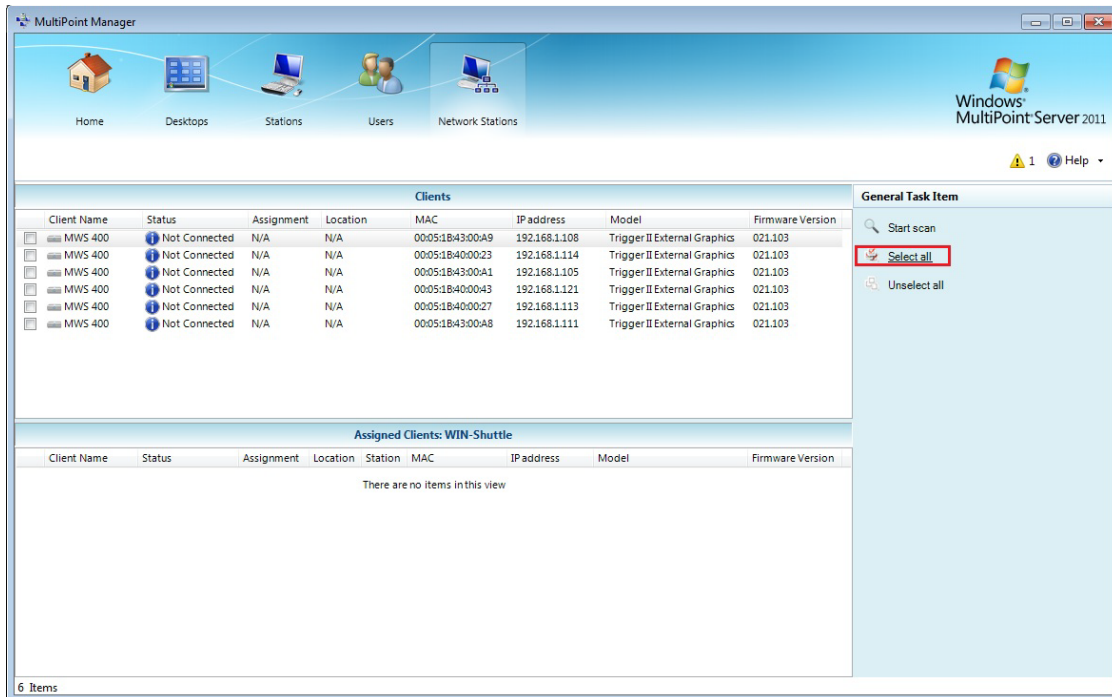
Click the block “☐” to select one of the stations under the column on the left side of the “client Name” and then click “Assign to this server” at the right column as illustrated.



MULTIPOINT USB over LAN Workstation

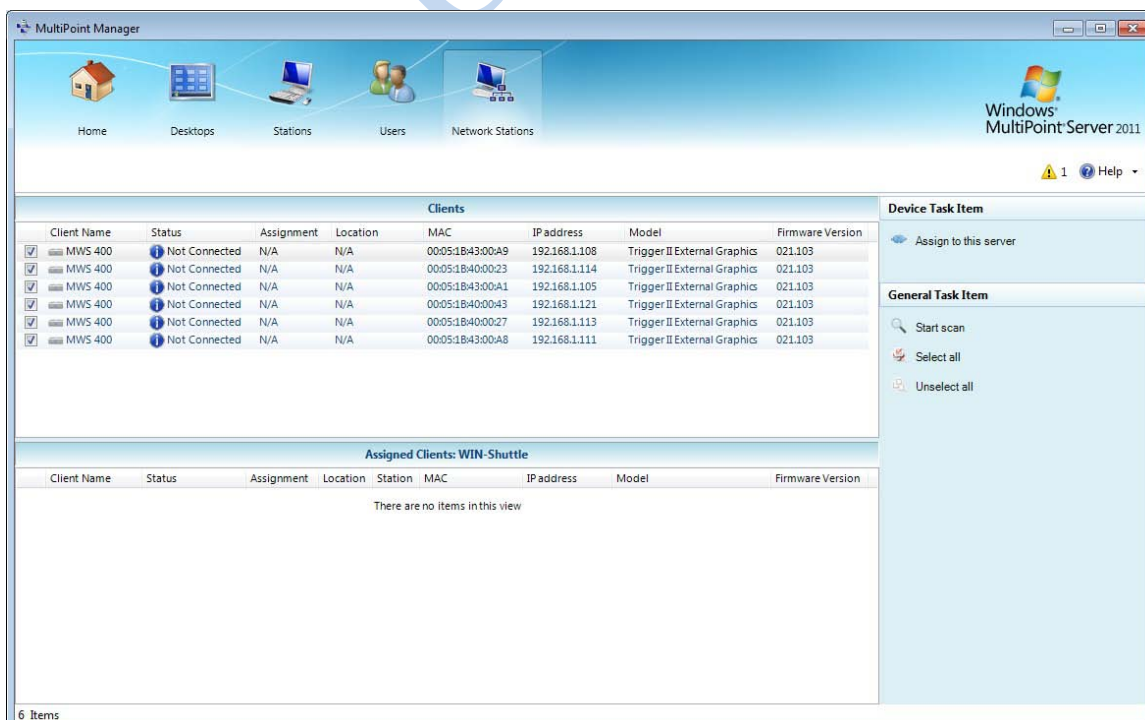
Step 3-1

If all of the stations need to be selected, simply click **“Select All”** at the right column under **“Device Task Item”**. After that, you will find all of the stations are selected as the blocks **“☐”**. Then, click **“Assign to this server”**.

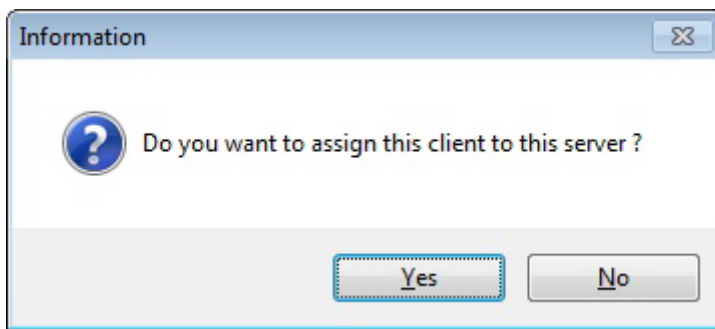


Step 4

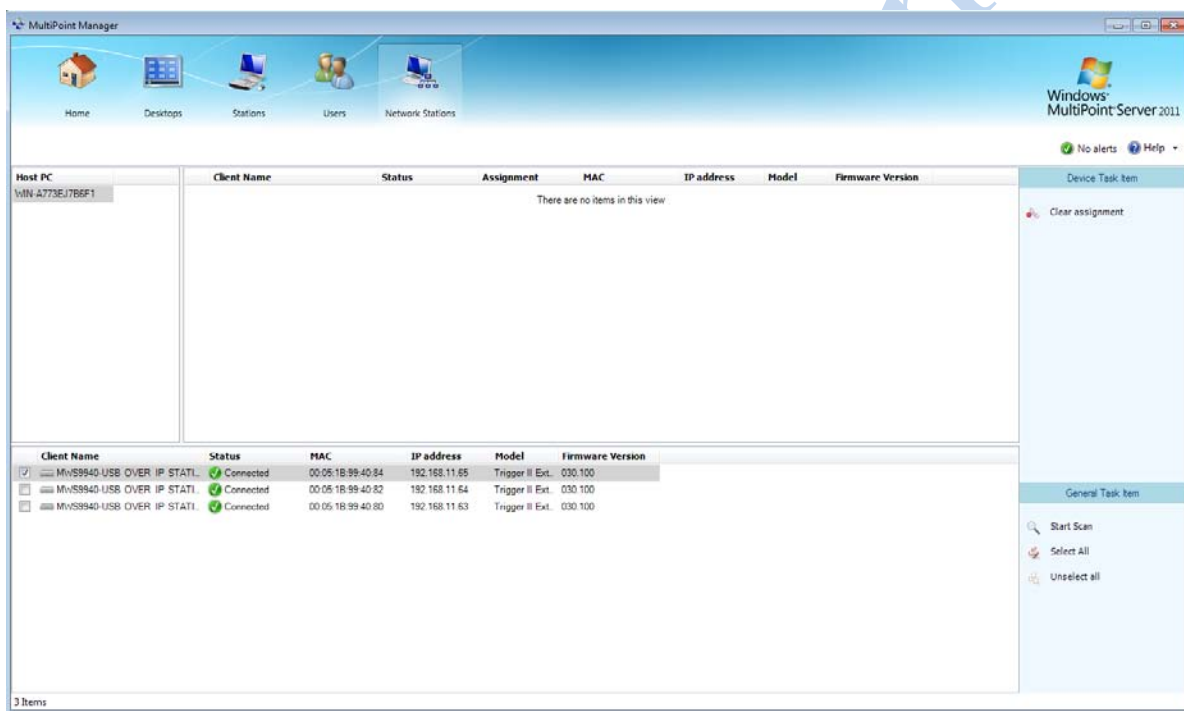
Click **“Yes”** to complete the station assignment. Repeat the same process of step3 – 4 for the any other one of the station you desire to select for station assignment.



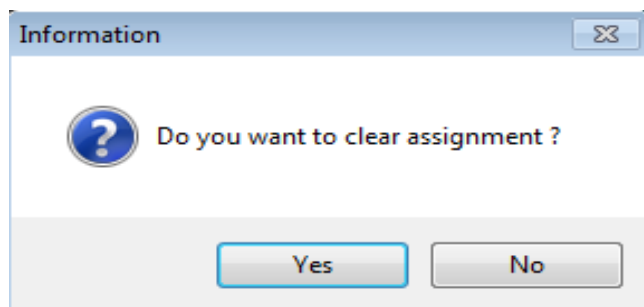
MULTIPOINT USB over LAN Workstation



NOTE: If any one of the stations needs to be disconnected, please select the station and Click **“Clear Assignment”** under **“Device Task Item”** on the right panel of the screen then click **“Yes”** while the dialog pop up for disconnection.
(following example drawing is using model MWS9940, the function is same as MultiPoint Workstation)



If all of the stations need to be disconnected, simply click **“Select All”** at the right column under **“General Task Item”**. After that, you will find all of the stations are selected as the blocks **“□”** and click **“Clear Assignment”** then click **“Yes”** while the dialog pop up for disconnection.

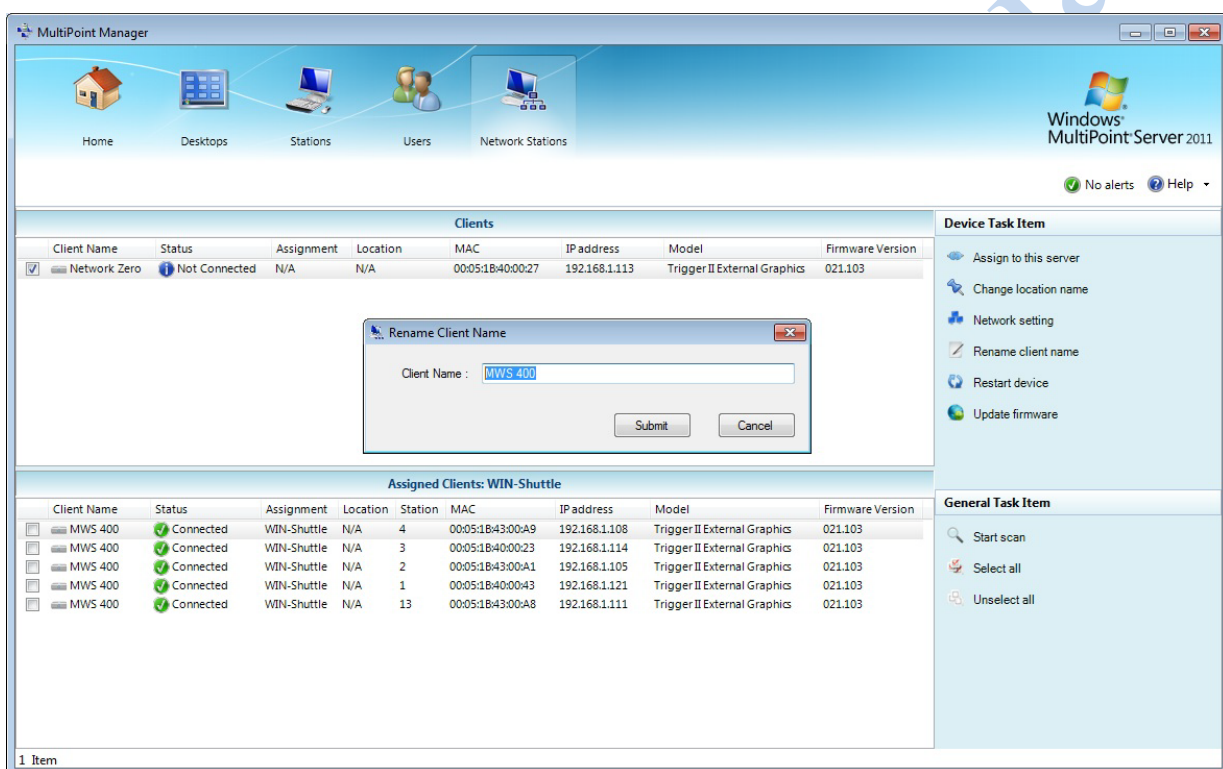


MULTIPOINT USB over LAN Workstation

STATIONS RENAME

Renaming the station may convenient administrator recognizing MAC address location by his own design, it needs to be done before station gets assignment. Rename step:

1. Select station “☒” by one left click.
2. Left click on “**Rename client name**” at right panel.
3. Rename dialog will pop up then typing desire name (e.g. CL1-John, CL2-Josh).
4. Click “**Submit**” to complete.



MULTIPOINT USB over LAN Workstation

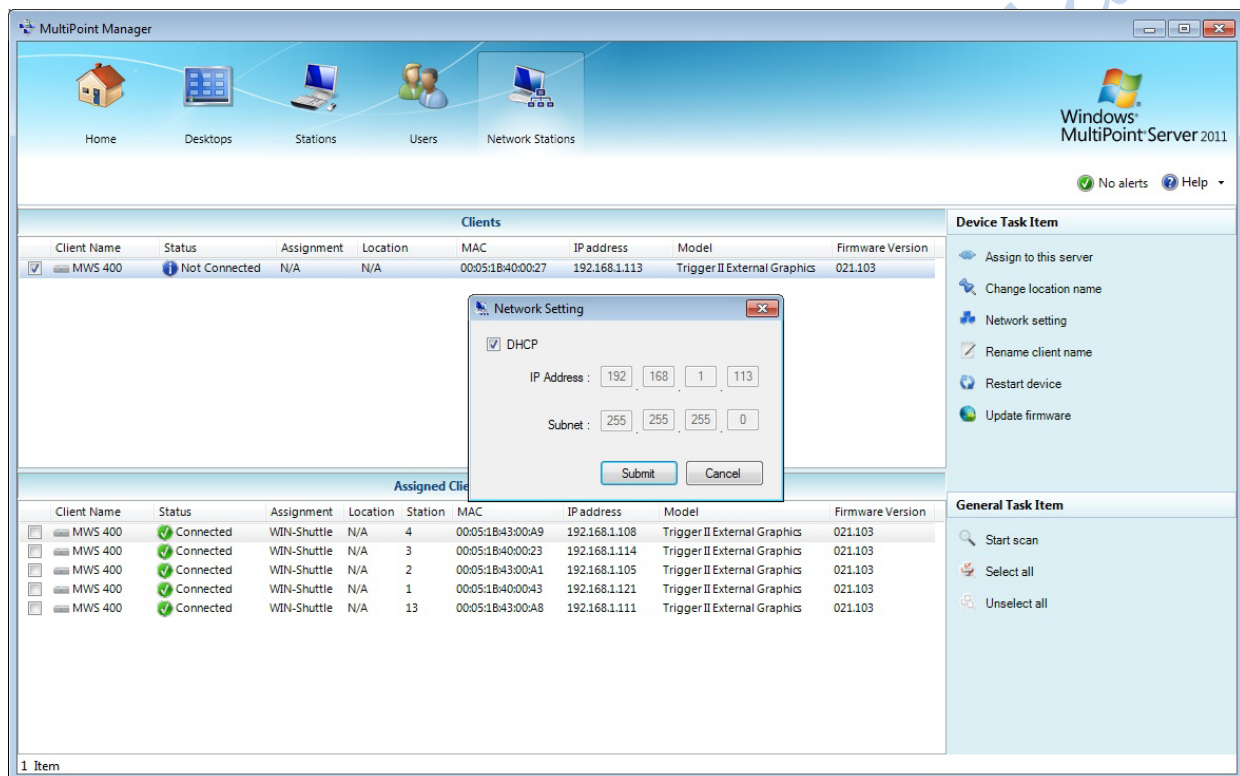
NETWORK SETTING

A Local Area Network setting to be prioritized either by Static IP or Dynamic IP for this Server, This Network setting needs to be done before station gets assigned.

“**Dynamic IP**” is recommend with Router Device:

Select station by one left click highlight Left click on "**Network setting**" under Device Task Item .

Network setting dialog will pop out then left click the DHCP for auto distributing the IP address or manually type the IP address then click “**Submit**” on the dialog to complete.



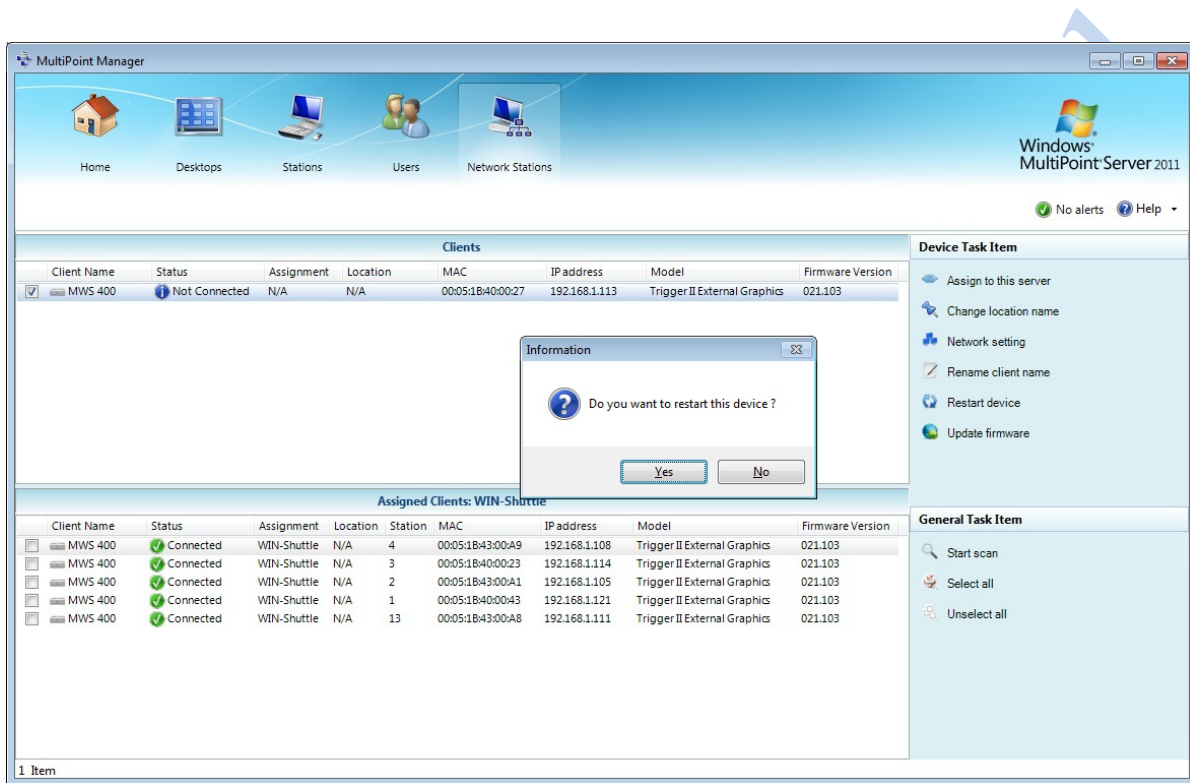
MULTIPOINT USB over LAN Workstation

RESTART DEVICE

Restart Device function can be use when there are some station did not recognize keyboard/mouse. “**Restart device**” needs to be done before station gets assignment.

Restart device step:

Select station by one left click highlighting Left click on “**Restart device**” under “Device Task Item.” Click “**Yes**” on the dialog to complete.

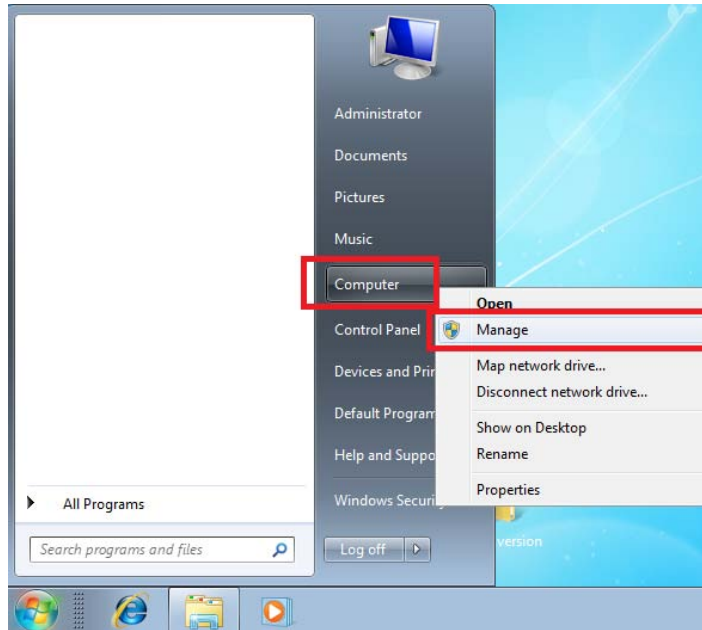


MULTIPOINT USB over LAN Workstation

VERIFY THE MULTIPOINT WORKSTATION CONNECTION

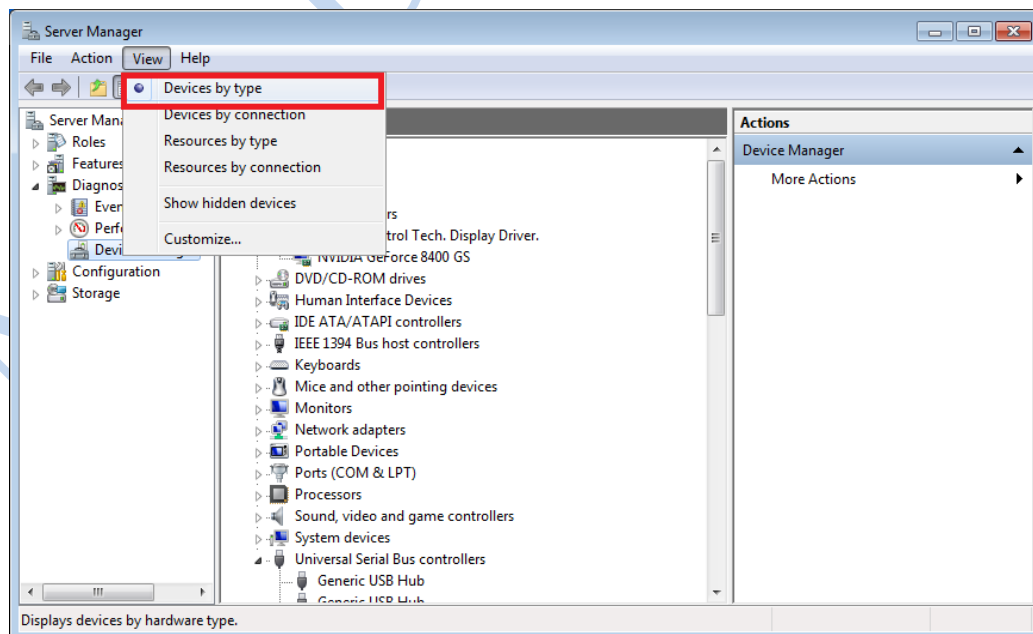
Step 1

Right click 'Manage' from the 'computer' as the screen

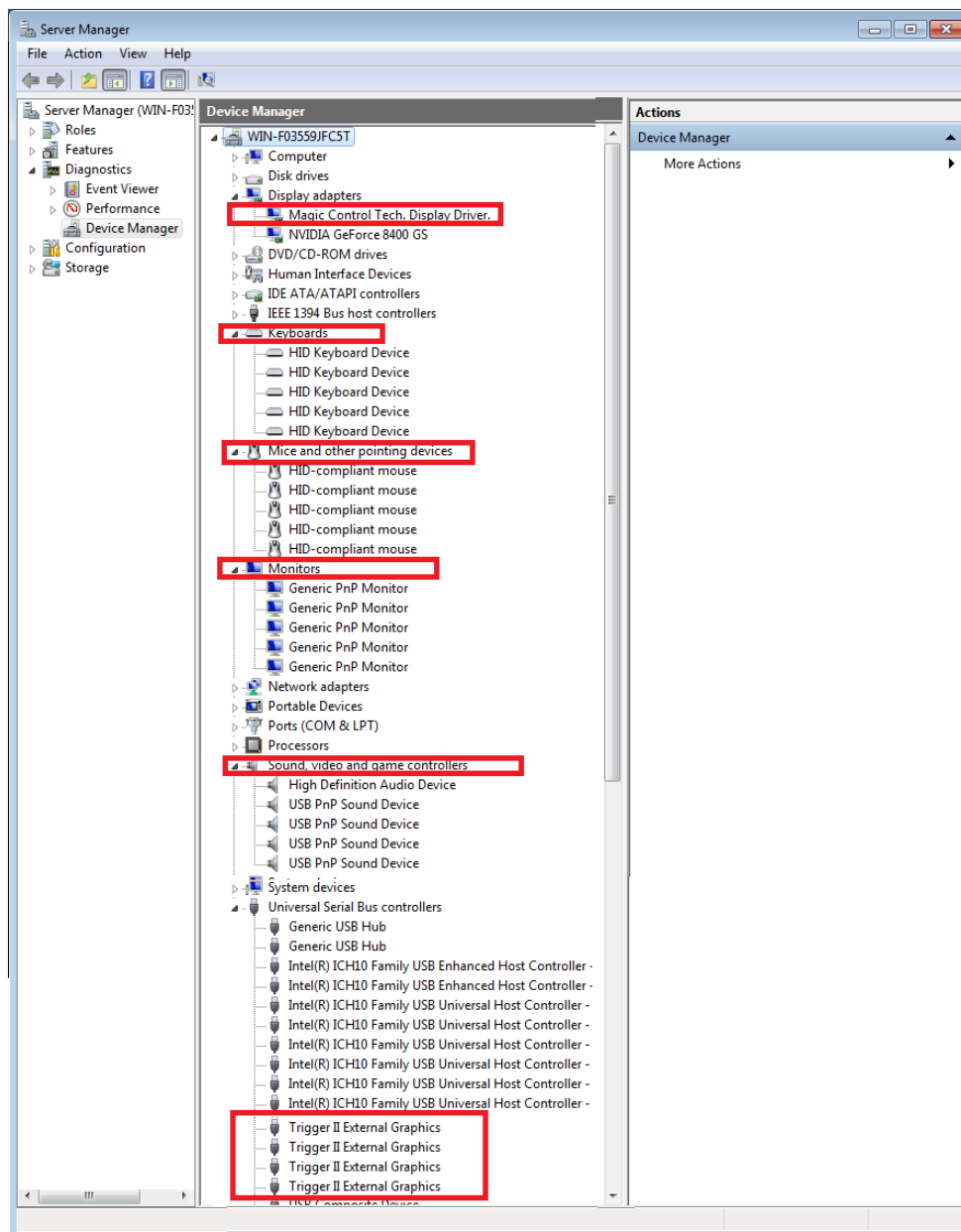


Step 2

Point to 'Device Manager' on the left panel under 'Server Manager' go to 'View' and click 'Devices by type' as the picture showed.



MULTIPOINT USB over LAN Workstation



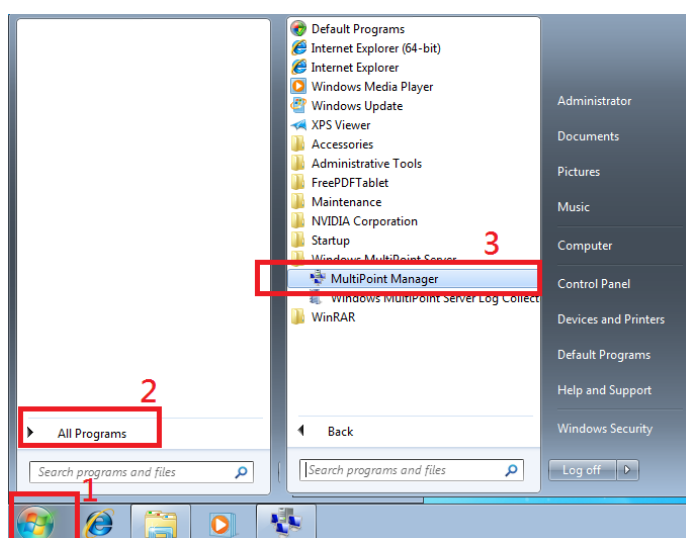
MULTIPOINT USB over LAN Workstation

ADJUSTING THE SCREEN RESOLUTION

By default, Windows MultiPoint Server 2011 will select the recommended resolution for each connected display. However, if you would like to choose a different resolution, follow these steps:

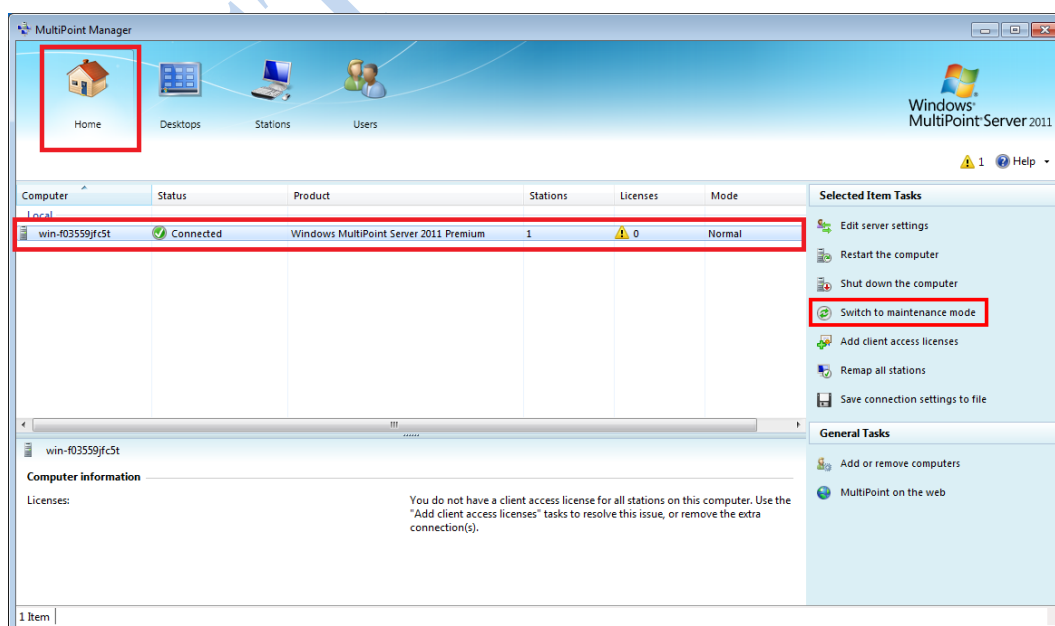
Step 1

Please follow up the procedure on illustration for getting into “MultiPoint Manager” as 1. Start → 2. All Programs → 3. Windows Multipoint Server → MultiPoint Manager



Step 2:

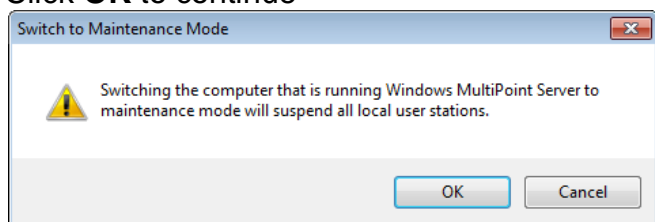
Go to MultiPoint Manager → Home → Local Station → switch to maintenance mode



MULTIPOINT USB over LAN Workstation

Step 3:

Click **OK** to continue

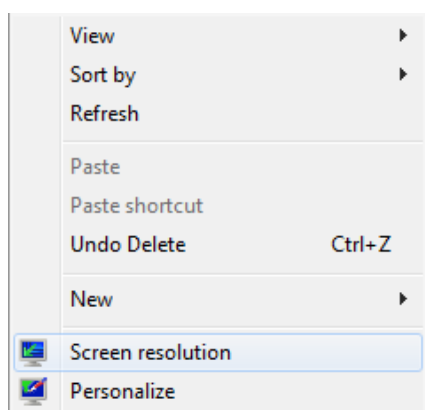


Step 4

Press "**Ctrl + Alt + Delete**" to log in administrator into **Maintenance Mode**

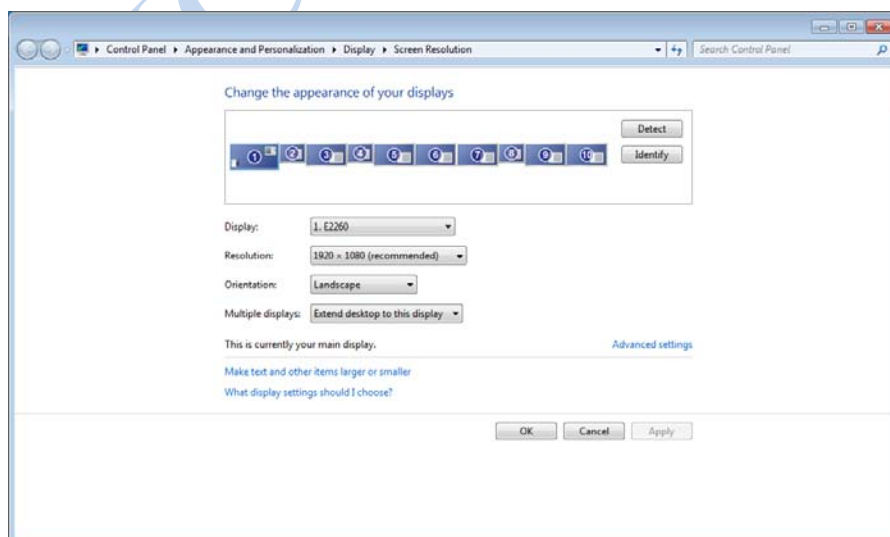
Step 5

Right click on the desktop and choose **Screen resolution** from the contextual menu.



Step 6

Click "**Identify**" to identify each display. Then click on the display to be adjusted and choose the desired resolution from the **Resolution** dropdown menu. (suggest: better using the system recommend resolution).



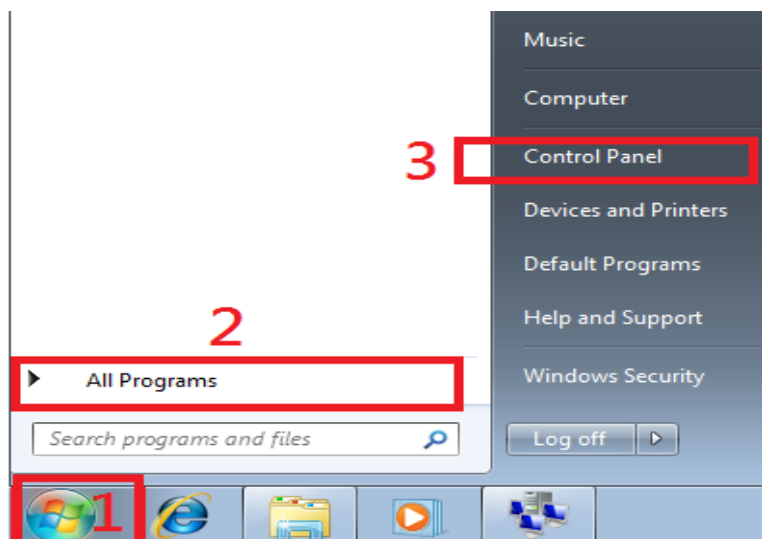
MULTIPOINT USB over LAN Workstation

DEVICE DRIVER UN-INSTALLATION

The following procedure allows you to uninstall the MultiPoint Workstation device driver. Please make sure all MultiPoint Workstation are unplugged from your server before executing the device driver uninstallation program.

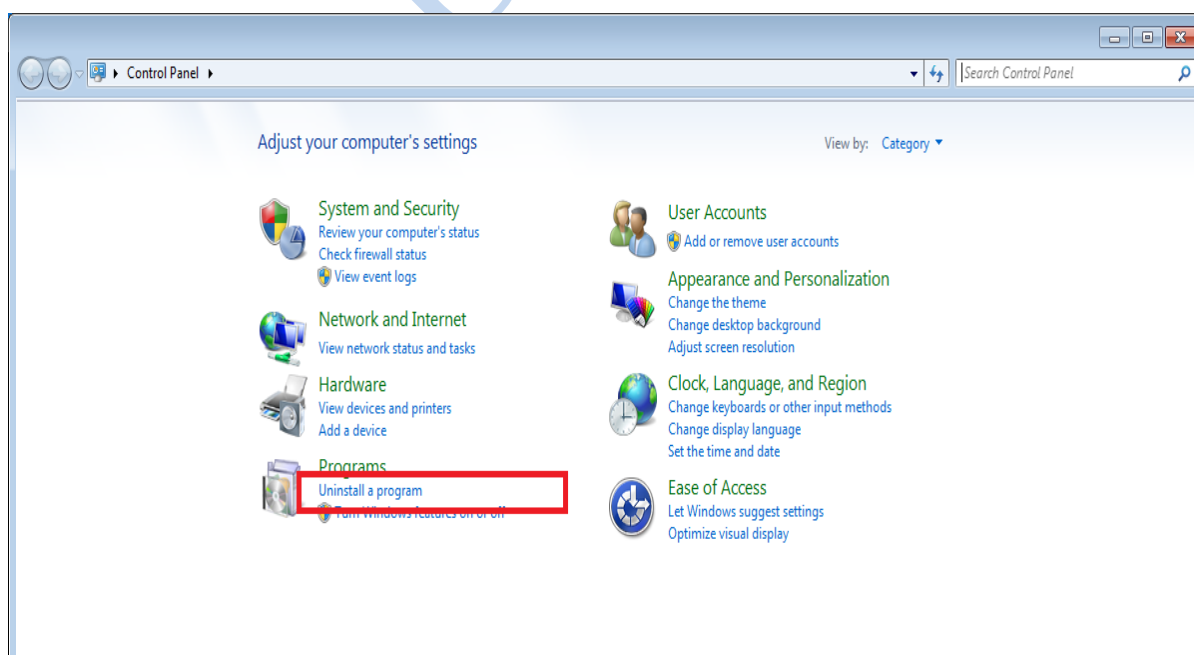
Step 1

1. Click Start → 2. All Programs → 3. Control Panel



Step 2

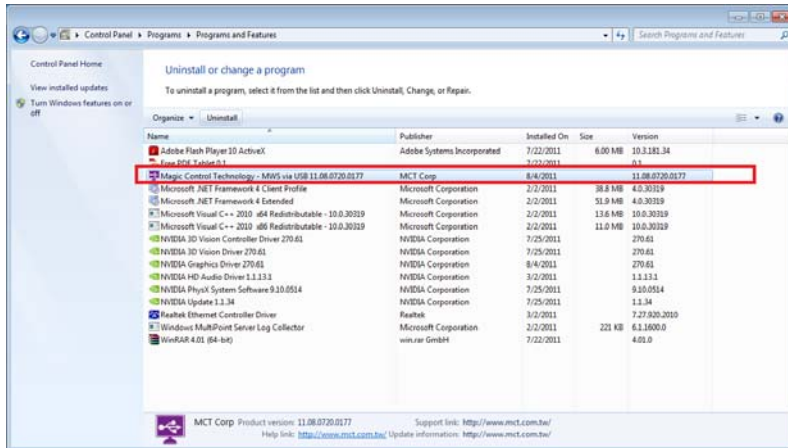
Double click “Uninstall a program” as illustrated on the screen.



MULTIPOINT USB over LAN Workstation

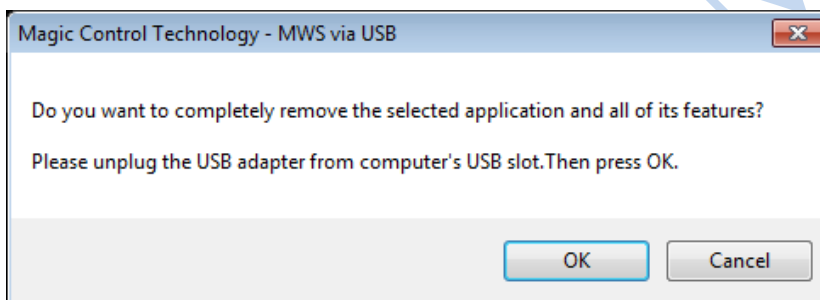
Step 3

Select the “**Magic Control Technology – MWS xx.xx.xxxx.xxxx**” item. Click Uninstall button.



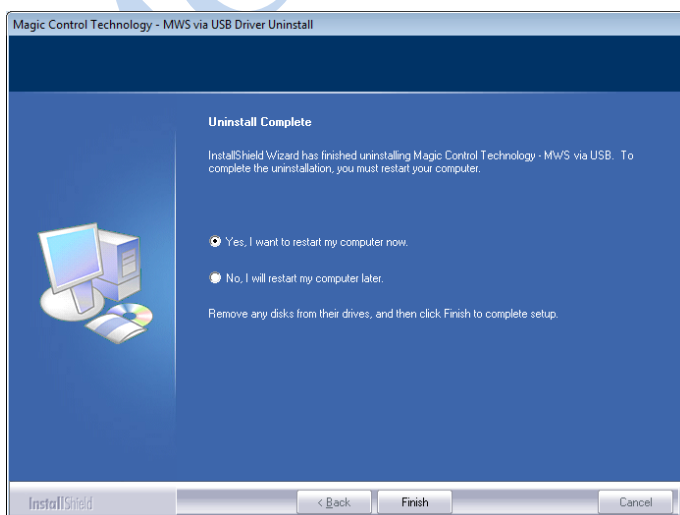
Step 4

Click “**OK**” to continue



Step 5

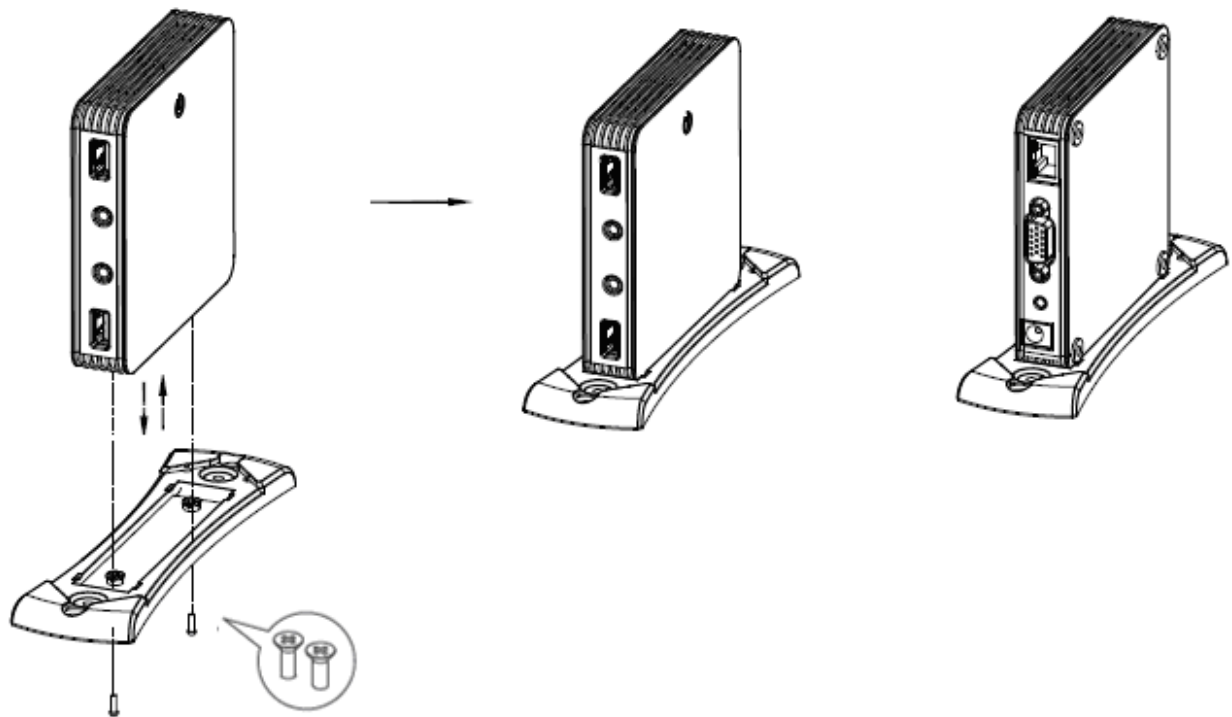
Select “**Yes, I want to restart my computer now**” and click “**Finish**” to reboot. The driver is now uninstalled.



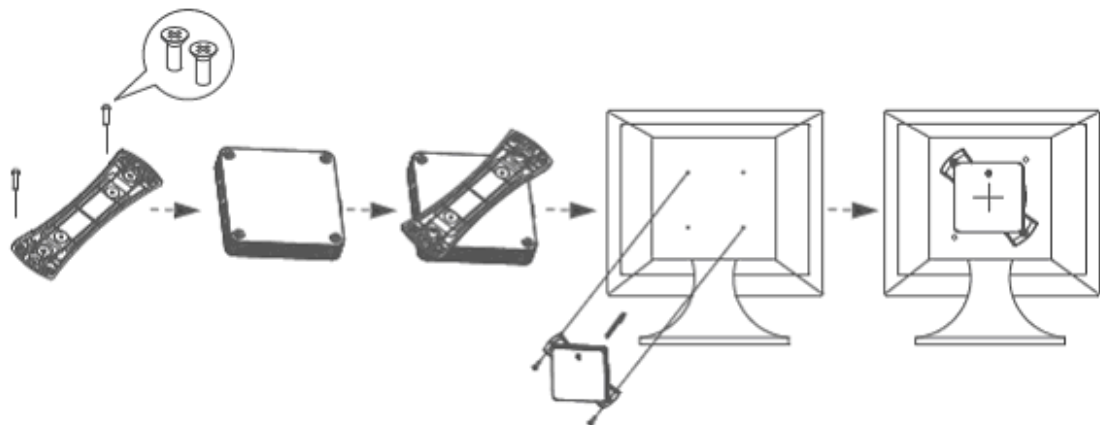
MULTIPOINT USB over LAN Workstation

VESA MOUNTING

SETUP 1



SETUP 2



MULTIPOINT USB over LAN Workstation

TROUBLESHOOTING TIPS

The following troubleshooting tips may help if you are experiencing any difficulties using our device.

- Plugging keyboard/mouse directly into main system USB ports is prohibit, administrator need to use an intermediate USB root hub for both keyboard & mouse connections from main system.
- Check to make sure that all connectors are plugged in correctly.
- Make sure to restart the server after the driver installation.
- Check the website to make sure you have the latest drivers.
- Reset/refresh/resynchronize your monitor.
- Full screen video display is not recommended; use Intel Sandy Bridge chipset may help with better performance.

For immediate support, visit <http://www.mct.com.tw> to find the latest documentation, Knowledge Base articles, and software for your device.

Copyright© 2013 Magic Control Technology Corp. All rights reserved. All trade names are registered trademarks of their respective owners. Features and specifications are subject to change without notice. Product may not be exactly as shown in the diagrams.